



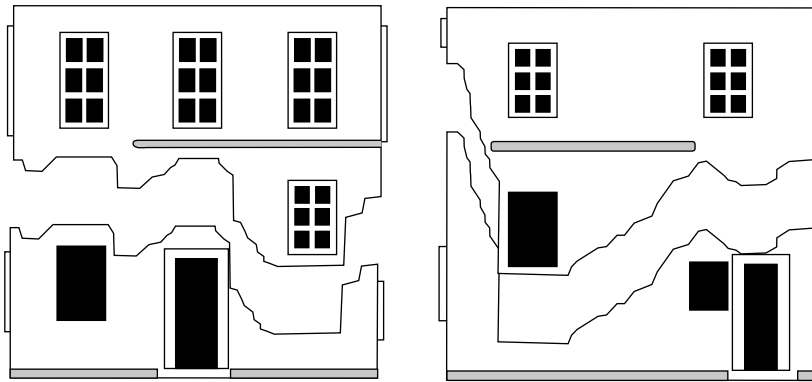
RAPID RUIN - French Town House/Shop

Assembly Guide

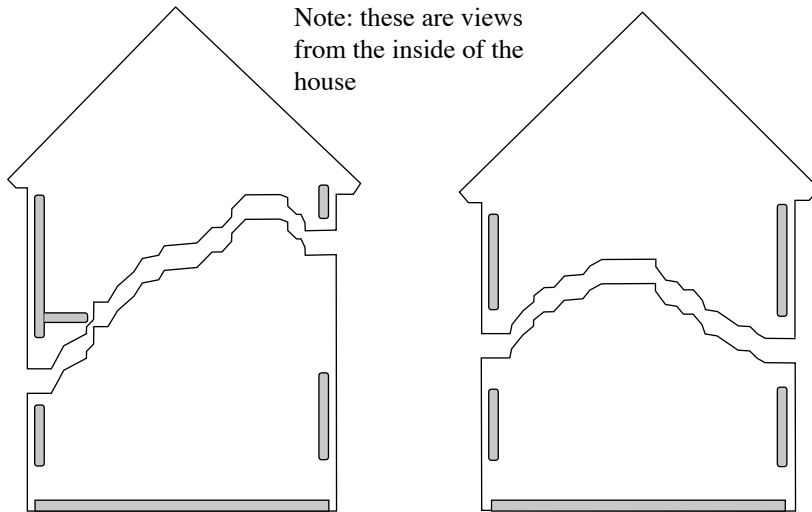
- Wash the sprues in warm water and washing up liquid.
- Remove components from the sprue with a sharp craft knife.
- Glue components using ordinary polystyrene glue.
- Paint with either enamel or acrylic paints.

Stage 1

- Remove the eight wall sections from their sprues.



Note: these are views from the inside of the house



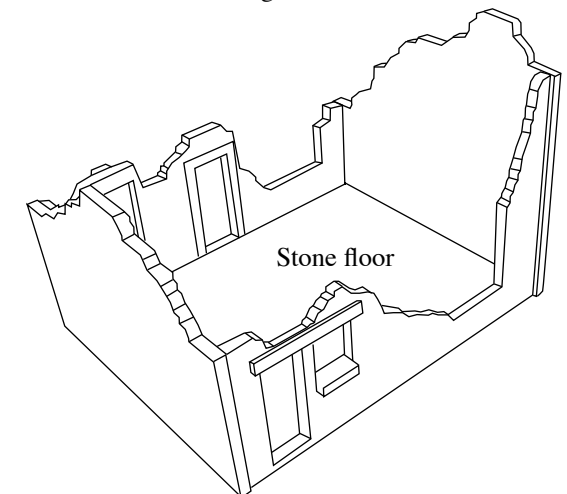
Stage 2

- Check each pair of wall sections fit together trimming any excess plastic as necessary.
- Do not glue at this stage.



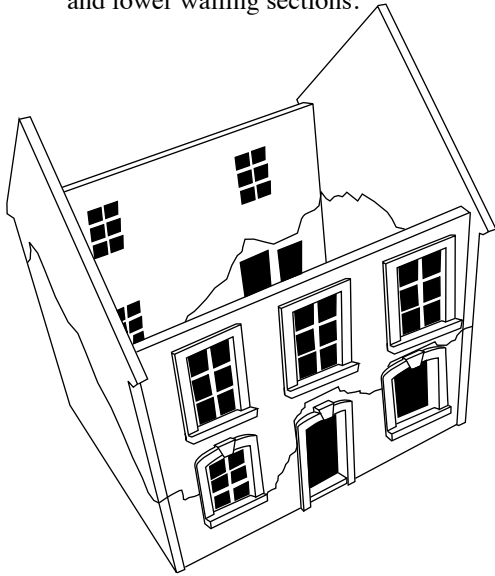
Stage 3

- Glue the bottom half of each wall to the building floor.
- Leave the glue to set.



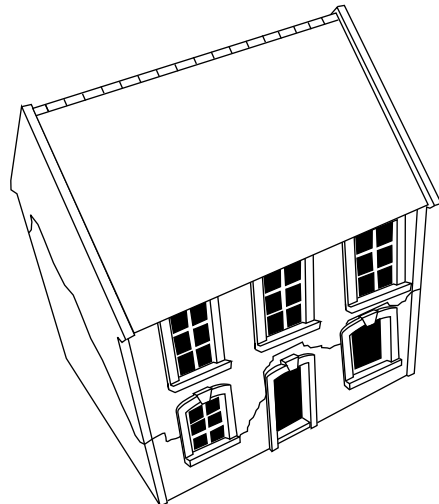
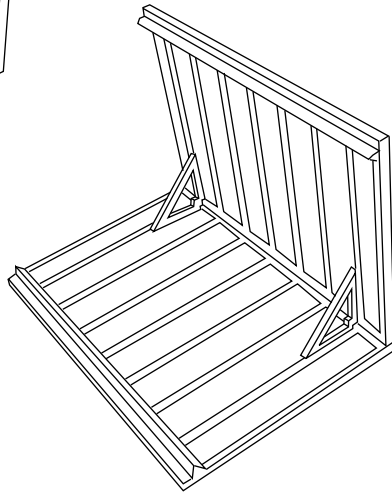
Stage 4

- 'Dry fit' the upper sections of the walls to the base ensuring all the locating lugs are a neat fit.
- Fit the optional flooring section if required at this stage.
- Glue the upper sections of the walls together taking care to ensure that no glue gets into the joint between the assembled top and lower walling sections.



Stage 5

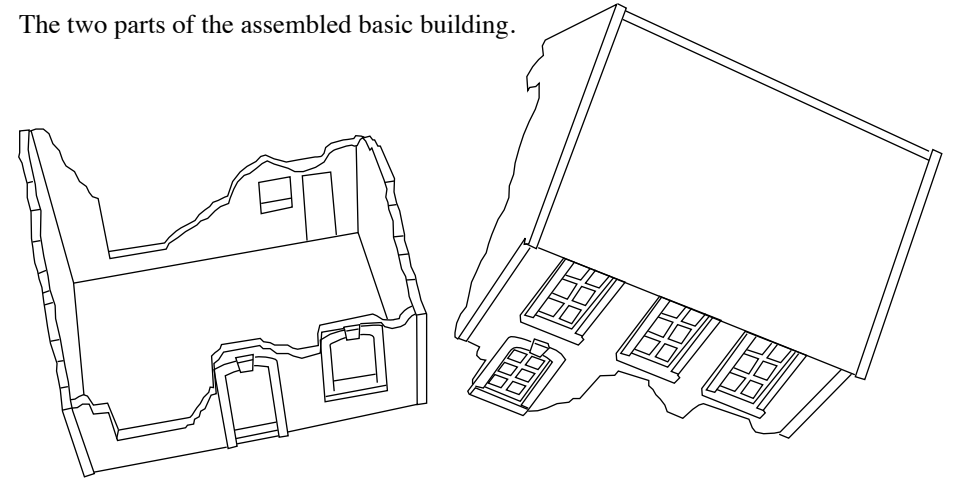
- Glue the two roofing sections together and glue the two bracing pieces in place.
- Leave the roof to set.



Stage 6

- To strengthen the top section glue the roof in place if no floor is fitted.
- When the basic building is dry it can be customised with different shutters, doors, shop front, chimney positions etc

The two parts of the assembled basic building.



Options

1. Dormer assembly
2. Shop front (and separate sign)
3. Shop window shutter
4. Semi ruined flooring section
5. Garage doors
6. Large shutter (x6)
7. Small shutter (x10)
8. Two chimnies (not illustrated)
9. Two sections of rubble/damaged tiles/broken window (not illustrated)

The model is designed to assembled in a variety of ways e.g. with or without a fixed roof, open/closed shutters, with or without a dormer etc.

